

**LAND AUCTION
CAMARGO, ILLINOIS
TWO TRACTS, AUCTION TO BE HELD ON SITE
1835 EAST CR 1000 N, CAMARGO, IL 61919
2 MILES EAST OF CAMARGO ON CR 1000 N
(WATCH FOR OUR AUCTION SIGNS)**

SATURDAY, FEBRUARY 4, 2012 AT 10:30 A.M.

TRACT 1: 40 acres, 39.22 tillable, improved with 40 x 58' Quonset bldg.

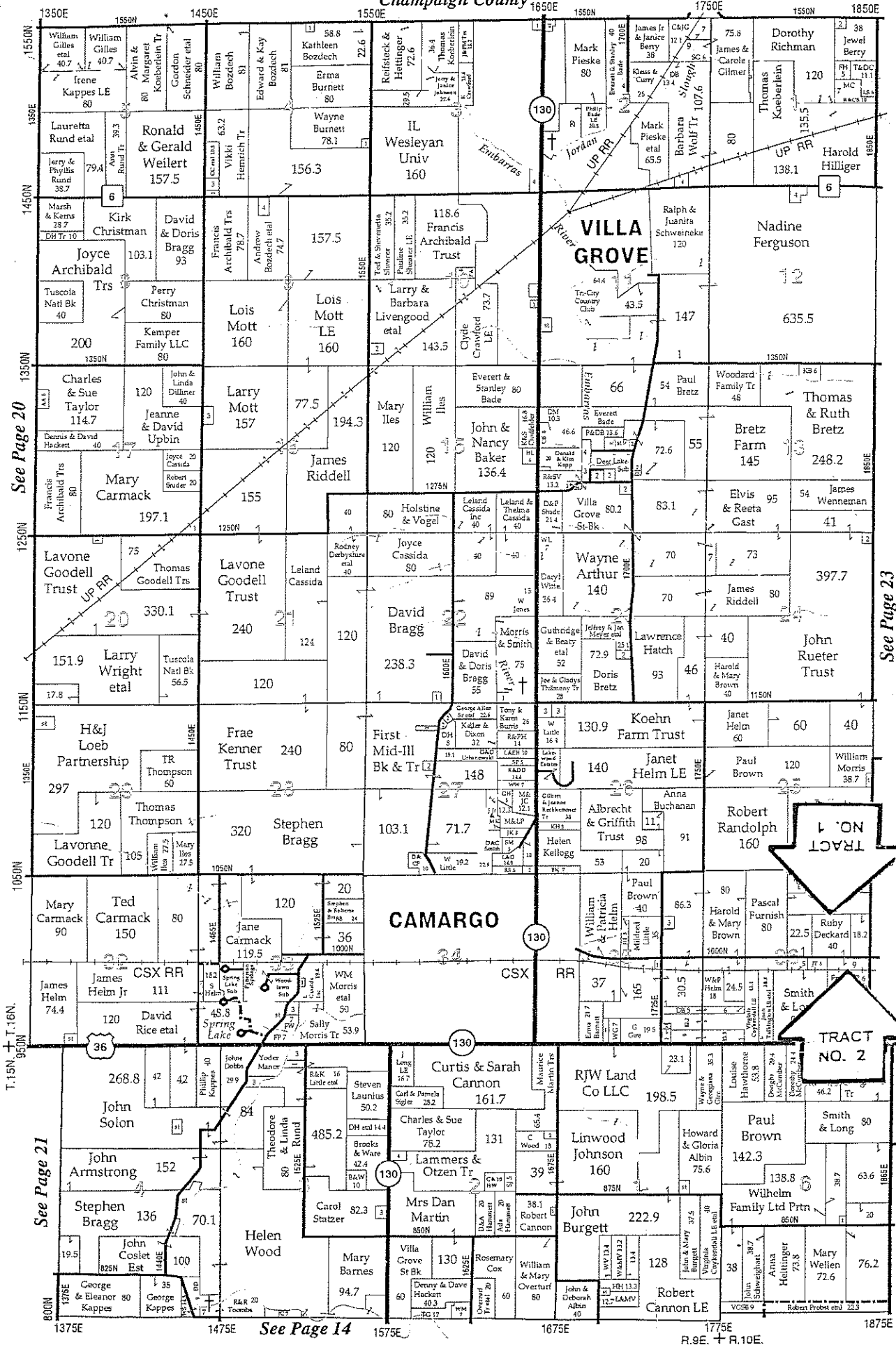
TRACT 2: 9 acres, 6.96 tillable, improved with 8 rooms, 2 story frame home, (living, dining, family, kitchen, utility, bedroom & bath down, with 2 bedrooms up). Home includes a small basement. Other improvements include 54 x 96' pole bldg., 1 car 18 x 26' garage. Home has propane gas furnace heat & central air. Villa Grove school district. For showing of property, contact the Auction Co.

TERMS: 10 % down payment on the day of the auction, upon signing contract to purchase. Balance payable at closing on or before March 4, 2012. Possession will be given at closing. Seller will pay the 2011 property taxes due in 2012, or give credit for same at closing based on the 2010 property taxes. Buyer will be responsible for taxes thereafter; seller reserves the right to reject any and all bids. Announcements sale day will take precedence over all previous advertising.

Ruby Nell Deckard, Seller

For Info or Brochure Contact:
GORDON HANNAGAN AUCTION CO.
Box 490, Gifford, Il 61847
Phone 217-568-7117 Fax 217-568-7377
www.gordyvilleusa.com

Champaign County



See Page 20

See Page 23

See Page 21

See Page 14

R.9E. + R.10E.



Not to Scale



United States Department of Agriculture
Farm Service Agency

December 21, 2011

Douglas County, IL

Farm: 3223
Tract: 3636

GIS_IL.SDE.Wet_P_i1041

Wetland Determination Identifiers

- Restricted Use
- ▽ Limited Restrictions
- Exempt from Conservation Compliance Provisions

Disclaimer: Wetland identifiers do not represent the size, shape or specific determination of the area. Refer to your original determination (CPA-026 and attached maps) for exact wetland boundaries and determinations, or contact NRCS.



United States Department of Agriculture
Farm Service Agency

December 21, 2011

Douglas County, IL

GIS_IL.SDE.Wet_P_il041

Wetland Determination Identifiers

- Restricted Use
- ▽ Limited Restrictions
- Exempt from Conservation Compliance Provisions

Farm: 3223
Tract: 1003

Disclaimer: Wetland identifiers do not represent the size, shape or specific determination of the area. Refer to your original determination (CPA-026 and attached maps) for exact wetland boundaries and determinations, or contact NRCS.

Illinois
 Douglas
 Report ID: FSA-156EZ

U.S. Department of Agriculture
 Farm Service Agency
 Abbreviated 156 Farm Record

FARM: 3223
 Prepared: 12/21/11 2:09 PM
 Crop Year: 2012
 Page: 2 of 2

Tract Number: 3636 Description D10-4* SEC 36 T16N R9E

FAV/WR
 History
 N

BIA Range Unit Number:

HEL Status: Classified as not HEL

Wetland Status: Tract does not contain a wetland

WL Violations: None

Farmland	Cropland	DCP Cropland	WBP	WRP/EWP	CRP Cropland	GRP
40.0	39.2	39.2	0.0	0.0	0.0	0.0
State Conservation	Other Conservation	Effective DCP Cropland	Double Cropped	NAP	MPL/FWP	
0.0	0.0	39.2	0.0	0.0	0.0	

Crop	Base Acreage	Direct Yield	CC Yield	CRP Reduction	CRP Pending	CRP Yield	CCC-505 CRP Reduction	PTPP Reduction
CORN	33.6	136	136	0.0	0.0	0	0.0	0.0
SOYBEANS	5.6	41	41	0.0	0.0	0	0.0	0.0
Total Base Acres:	39.2							

Owners: RUBY N DECKARD
 Other Producers: None

TRACT
 NO. 1

REAL ESTATE TAXES \$1,282.82

Tract Number: 1003 Description D10-4* SEC 36 T16N R10E

FAV/WR
 History
 N

BIA Range Unit Number:

HEL Status: Classified as not HEL

Wetland Status: Tract does not contain a wetland

WL Violations: None

Farmland	Cropland	DCP Cropland	WBP	WRP/EWP	CRP Cropland	GRP
9.0	7.0	7.0	0.0	0.0	0.0	0.0
State Conservation	Other Conservation	Effective DCP Cropland	Double Cropped	NAP	MPL/FWP	
0.0	0.0	7.0	0.0	0.0	0.0	

Crop	Base Acreage	Direct Yield	CC Yield	CRP Reduction	CRP Pending	CRP Yield	CCC-505 CRP Reduction	PTPP Reduction
CORN	3.5	136	136	0.0	0.0	0	0.0	0.0
SOYBEANS	3.5	41	41	0.0	0.0	0	0.0	0.0
Total Base Acres:	7.0							

Owners: RUBY N DECKARD
 Other Producers: None

TRACT
 NO. 2

REAL ESTATE TAXES \$ 595.12